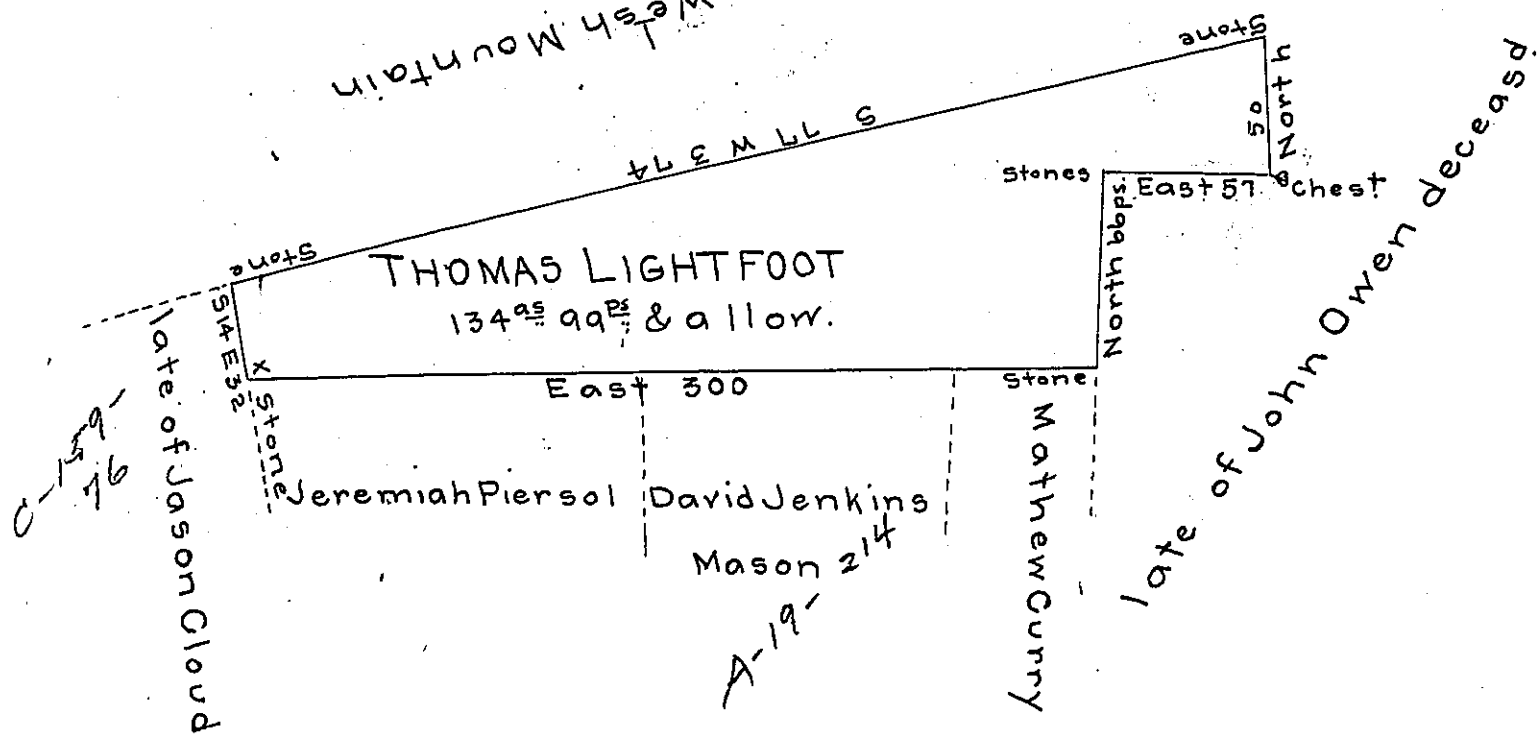


A-38-197

The Top of the Mesh Mountain



The above draft represents a tract of land situate  
 in Honey brook (late West Nantmill) Township Chester  
 county containing 134<sup>as</sup> 99<sup>ps</sup> & allowance of six per cent &  
 Surveyed to Thomas Lightfoot on his warrant bear-  
 ing date the 4<sup>th</sup> day of August Anno Domini 1772  
 August 2<sup>d</sup> 1806

Signd Ja. Hindman D.S.

To Samuel Cochran Esq.)  
 Surveyor General }

IN TESTIMONY that the above is a copy of the original remaining on file in  
 the Department of Internal Affairs of Pennsylvania, made  
 conformably to an Act of Assembly approved the 16th day of  
 February, 1833, I have hereunto set my Hand and caused  
 the Seal of said Department to be affixed at Harrisburg,  
 this eleventh day of August 1905

*James P. Ross*  
 Secretary of Internal Affairs.